



AMERICANA



800-552-5250

Fax 530-550-9675

e-mail: russ@americanarv.com

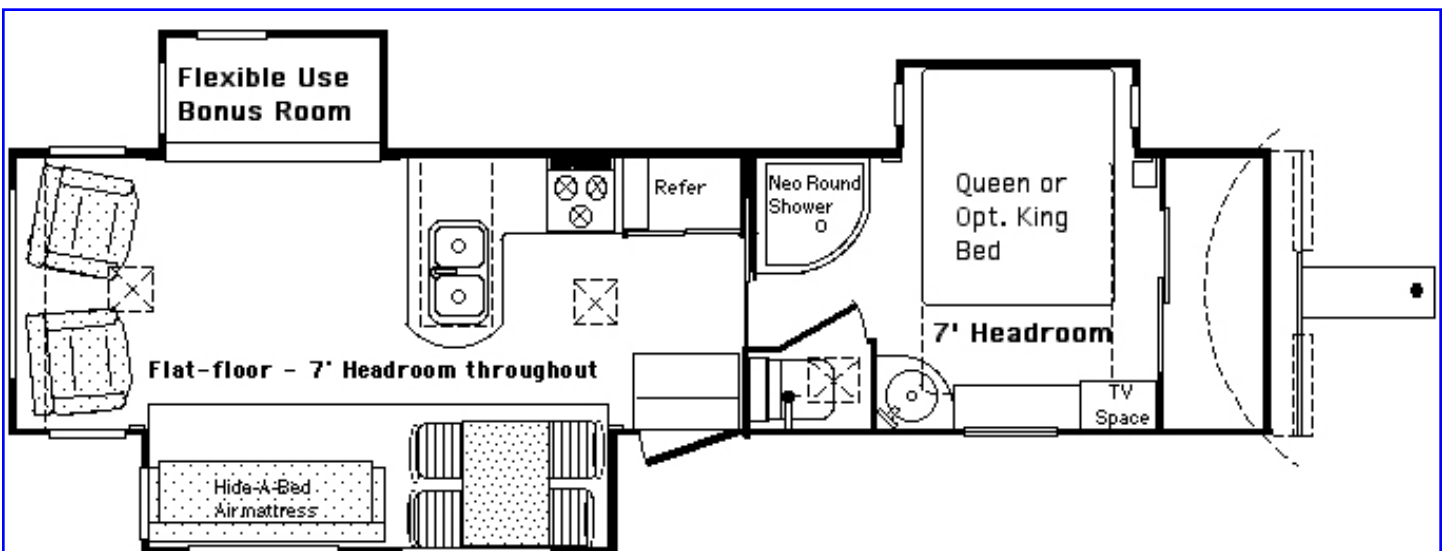
www.americanarv.com

Sequoyah Full Basement Storage - Liveable 4 seasons - Designed with full-timers in mind



Lower frontal area & wedge shape means approx 22% less aerodynamic drag than contemporary fifthwheel designs.

Body Length approx 34' 5" - Flat floor - Flat Roof Throughout
Exterior Height approx 11' 5" - 84" inside headroom clearance
Snap-shot at Trailer Life Magazine office
Ventura, California 4/10



Designed to be towed by short or long beds. Short-bed tight 90° maneuvers need no special hitch for cab to body clearance. More basement area storage and useable living space then in most 40' quad-slides. No climb up to bedroom/bathroom. *Patent Pending*

Manufacturer reserves the right to change specifications, sizes, capacities, features or prices without notice. 4/10



Huge Full heated storage basement
-
10 side access doors
-
20" nominal overhead basement clearance
-
heavy liquid storage tanks over the axles, where that big variable weight should be located
-
no visible chassis frame to impede loading access

Patent Pending

Americana Sequoyah Huge basement storage with all major systems and tanks installed in the basement instead of using space inside main living area cabinets. Inside main floor cabinet space is yours, not some appliance's.

Fabulous crawl-thru basement storage.

Flat floor - front to back - no bedroom/bathroom rise. Full nominal 84" headroom throughout the floor-plan.

Compact towing - triple-side expanding - Approx 1' lower than a contemporary fifthwheel
= yields nominal 22% reduction in aerodynamic rolling resistance drag. Liveable design and easy to

tow, with better fuel efficiency than standard fifthwheels. You don't need a semi to tow a Sequoyah.

All major systems installed in heated basement: -
Hot water heater
Furnace or optional hydronic heater
Power distribution panel
100 gallon fresh water tanks

Custom built in Southern California. For additional information.

www.americanarv.com
800-552-5250
email: russ@americanarv.com

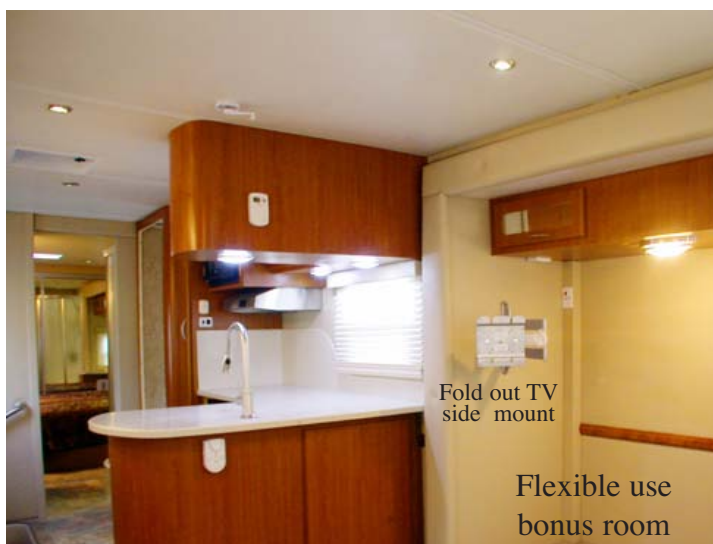
Sequoyah 34 Full Basement - Wide open flat floor living space - Clean-simple-cozy-decor



The very large solid surface kitchen counter return is bigger than most and is a full 30" deep. The customer for this model will be installing his own cook top/oven.

The slide-out bonus room is unique to the 34. The pull out cantilever side TV mount will hold up to a 32" LCD HD TV. The installed TV can be pulled out and point-

ed at the table, sofa or recliner chairs. When folded back to the bonus room slide-out side wall, the room is free for other uses. - Many customers have such uses in mind as sewing machine space, musical instruments, desks, computers, hobby benches, business displays, bunks for grand kids. Almost any thing imaginable.



Fold out TV
side mount

Flexible use
bonus room



Optional below counter space
for combo washer/dryer



The very open living-room feels spacious as the inside view is clear all the way from the entry to the rear window. A common comment is that the 34 "feels open like a small condo". Teddy is lounging on his favorite "Comfy" recliner.

All the below counter pull out drawers are birch with drawer sides secured by strong dove tails. The drawers are mounted on HD ball bearing, full pull out, extension slides. No left to right cabinet dividers between the drawers allow more

drawer vertical storage space clearance.

The Interior side-walls are padded & upholstered with easy to clean automotive vinyl and add 4 seasons insulation value.

The very wide & deep tread step-well, makes entry gradual and easy. There are 2 lower outside fold-out steps.



34 Full-basement model - Bedroom designed to meet a women's needs



Bedroom/bathroom are on the same level as the kitchen/living-room. • Full 7-foot (2133 mm) headroom in Bedroom/bath, kitchen and living room areas. All rooms are on the same level, with no stairs to climb.

- Full-height and extra-deep bedroom slide creates more open useable bedroom space.
- Very big solid-surface makeup area countertop.

- Corner medicine cabinet is extra deep with room for lots of cosmetics and other items.
- Vessel sink occupies minimal counter space and is easy on the back, as one doesn't have to stoop to use it.
- Closet, cabinets and shelves are softly lined.

Bedroom - Queen or King bed option; great end-of-bed cabinets with space for upper TV

- Very roomy 36-inch (914mm) Neo-round shower with inside corner footrest/seat and No drip double sliding doors. Home-style shower hardware with hot/cold mixer valve and shower bar.

- Upholstered pocket door separates the bedroom/bath area from the kitchen/living room area.

- Full sized private toilet space with high-volume fan. Extra large automotive vinyl-upholstered door; walls and ceiling also upholstered in the easy-to-clean tough, padded vinyl. Adult sized, easy-to-clean porcelain toilet.

- Full width, extra-deep, closet lined with aromatic cedar.



Some things just don't want to be left behind and the Sequoyah 34 has room for them!

For example:

Some items which might be part of your life-style and could fit in the flexible space bonus slide-out room on the left



Sewing Machine



Electric Organ/Piano



Hobby Bench



Ironing board

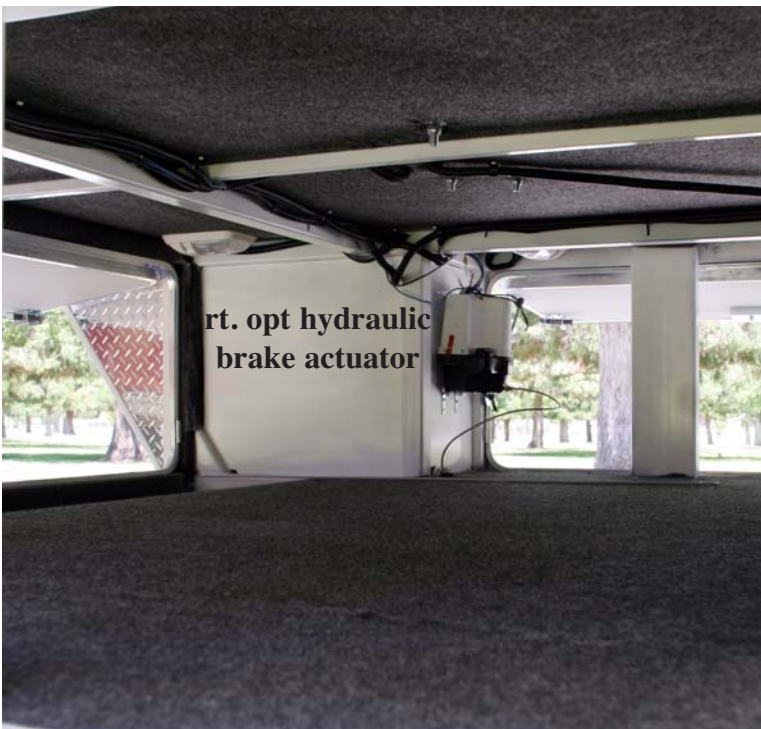


Kid Bunk(s)



Computer Desk

And in the big long front & side loading basement & rear basement you might tote :



Long boats load from the front



Portable Bar-b-que



River Raft



Large 12v Freezer



Catacraft



Kayak - front loads



Camping Gear

**Sequooyah 34 Flat roof - flat floor - lower front area reduced 22%
At least 1 foot lower than a standard fifthwheel
84" Nominal inside main floor full length front to back head clearance
No stepup to bedroom/bathroom - Huge full timer's basement storage
Less wind resistance means - much easier to tow**



Useful space in a Sequoyah 34 triple-slide, tops available space in most 40 quad-slides



View from the front basement access door, of the very long forward heated basement storage area. There is access from both sides as well as the front. Coop is back by the 100 gallon fresh water tanks and grey

water tank, installed in the heated basement, over the axles. That is where that variable weight should be. Long cargo, ie kayaks, etc. can be loaded from the front. A good place for grand-kids to hide.





Rear basement storage with access from 2 sides and the rear. A great place to keep kids.



Above is the air-ride leveling control. Simply pump up the low side and bleed air from the high side. We have an 12v electric 120 psi pump and reserve air tank.



Opt. trailing arm, smooth towing, air-ride and hydraulic disc brakes, being prepared for installation.

A magic open basement boxed frame chassis design re-invents fifthwheel travel trailers

The Custom Built 4 seasons Sequoyah Full Basement model is designed to meet the rigors & requirements of full timing and to tow smoothly.

The following are there, but magically disappear and are “out of the way”:

- A) Center chassis cross framing
- B) Chassis front-to-back frame rails

This disappearing act allows total use of the big 20” tall basement center section for storage, tanks and accessories. Power distribution panels, pumps, water heater, hydronic heater are all in the heated basement and not in an upstairs cabinet. Upstairs usable space in the 34 triple-slide Sequoyah is therefore greater than in most quad-slide 40’ers. For best weight and balance distribution, the 100 gallon, 800 lb variable fresh water supply should be and is over the axles.



More spectacular magic:

A) The Sequoyah design has a flat floor, with a nominal upper level living area 84” head clearance. No step up to the bedroom/bathroom area.

B) Aerodynamic drag is reduced approximately 22% with a lower frontal area than standard US built fifthwheels. Magic? Not really. For example: the roof is about 1 foot lower than a standard fifthwheel. The smaller the frontal area, the lower the aerodynamic wind resistance. It’s just simple arithmetic.

C) The huge open basement is conveniently accessed from all 4 sides.

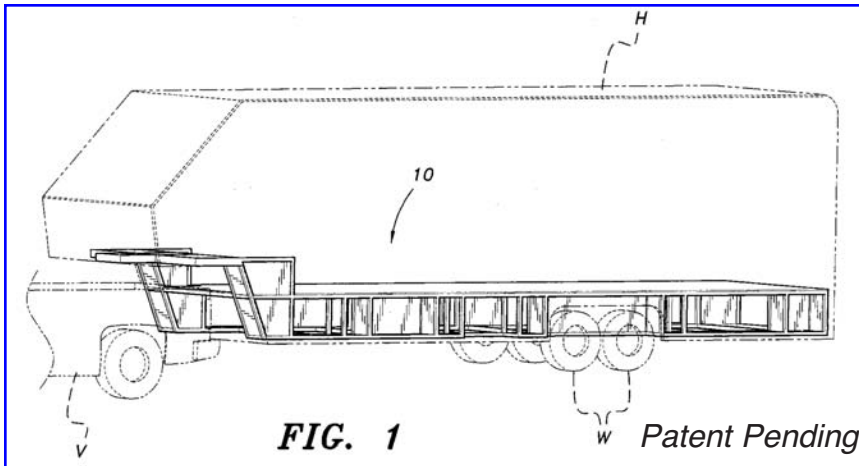


FIG. 1

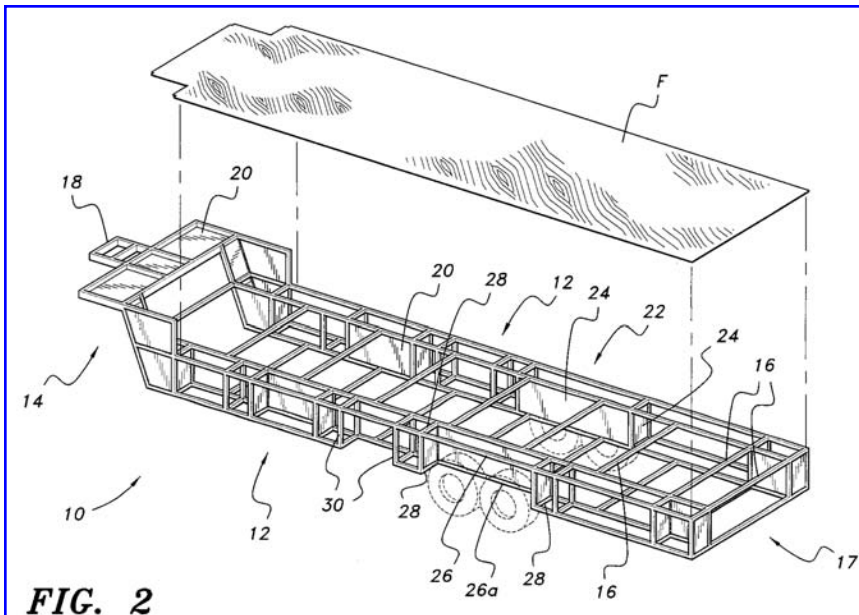


FIG. 2

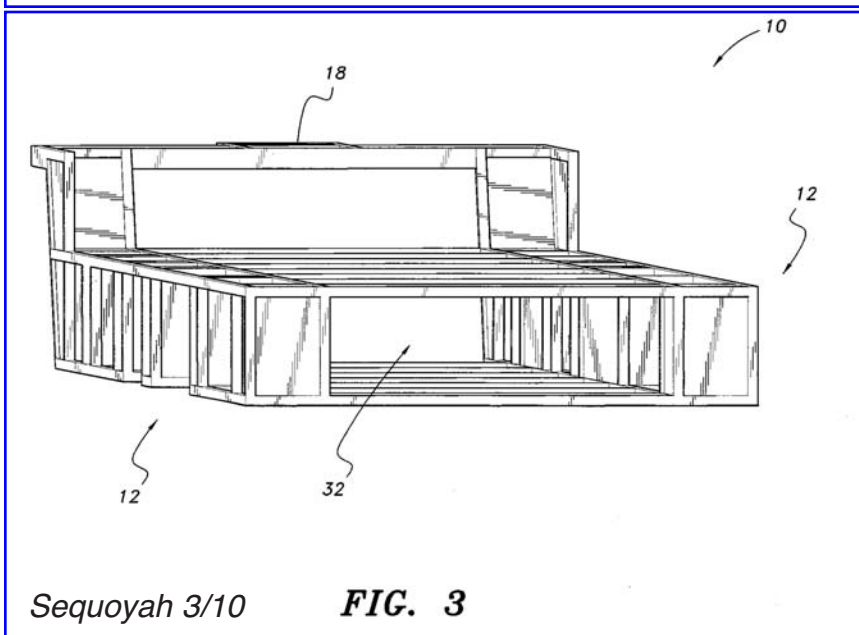


FIG. 3

Sequoyah 3/10